



coatmaster

Product catalogue
2025

Valid from July 1, 2025

Revision 202500708

coatmaster

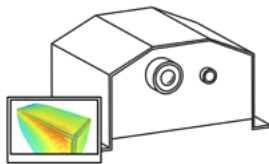
Product catalogue



coatmaster Flex

4

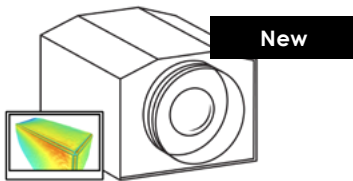
[More>>](#)



coatmaster 3D Modular

7

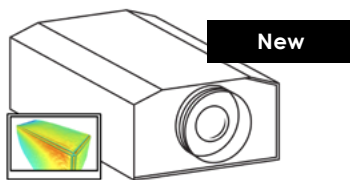
[More>>](#)



coatmaster 3D Inline

9

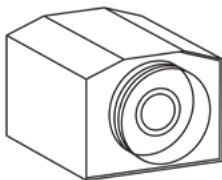
[More>>](#)



coatmaster 3D Aline

11

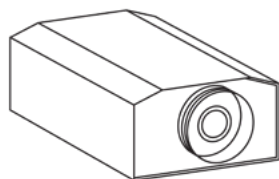
[More>>](#)



coatmaster Inline

13

[More>>](#)



coatmaster Aline

14

[More>>](#)

coatmaster Flex

The revolution in contactless coating thickness measurement

coatmaster Flex – Efficiency and quality in one device

The coatmaster Flex is the most advanced handheld device for **contactless coating thickness measurement**.

It enables **early measurement** in the coating process, ensuring optimal material usage and preventing costly rework.



Reduces paint consumption – Optimized coating lines save more than 30% on paint on average.



Reduces rework – Prevents costly errors and enhances the efficiency of your coating line.



Automatic documentation – Seamless integration into quality control systems.



Reduces training time – Onboard personnel 6x faster.



Closed-loop-ready – Upgrade your coating line with closed-loop technology at any time.



Measure in the running line – Direct measurement on moving parts without stopping production.



Fast & precise – No handling problems or fluctuating results, thanks to an ultrafast 0.3-second measurement process.



Accurate even for high coating thicknesses – Reliable measurements up to 500µm.



Completely eye-safe operation – No lasers or other harmful radiation.



coatmaster Flex
Art. No. 100.0100

Scope of delivery:

- Measurement device coatmaster Flex
- Test certificate
- FlexBelt
- FlexSleeve
- Flex Cloud Server license (data view, export, backup and web data services) for 24 months
- Extended 24 months warranty (*)

Not part of scope of delivery:

- FlexCase, batteries and battery charger.



More information about the coatmaster Flex:
www.coatmaster.com/en/flex

(*) Warranty extension for another 12 months if Flex maintenance is conducted in 12th month of operation at authorized maintenance provider

coatmaster Flex Accessories

Enhance your coatmaster Flex experience and maximize its capabilities with our range of articles.

FlexSafe

Art. No. 200.0029



Lockable cabinet with a viewing window for the safe and protected storage of the coatmaster Flex, the calibration certificate, and the operating instructions right next to the coating line.

Dimensions 262 x 291 x 532 mm.

FlexBelt

Art. No. 200.0031



For easy transport of the coatmaster Flex. Durable belt for secure and comfortable carrying.

FlexSleeve

Art. No. 200.0033



Protective neoprene sleeve for the coatmaster Flex.

Made of neoprene, this sleeve cushions the device and shields it from scratches and powder coating particles.

FlexORA

Art. No. 400.0216



The FlexORA enhances the repeat accuracy of measurements. Amplifies the optical reflex for precise readings.

FlexCase

Art. No. 400.0222



For transporting and storing the coatmaster Flex and its accessories. Robust carrying case with a foam insert for added protection and organized storage.

Bosch battery

Art. No. 420.0008



Power source for operating the device.

Includes one Bosch® batteries (4.0 Ah 18 V) for sustained performance.

Sold only within the EU.

coatmaster Flex Accessories

Enhance your coatmaster Flex experience and maximize its capabilities with our range of articles.

Bosch charger
Art. No. 420.0009



One Bosch® battery charger with optimised charging speed for compact 18 V batteries.

Sold only within the EU and comes with an EU plug.

coatmaster Flex Local Server
Art. No. 420.0077



The FlexLocalServer, equipped with pre-installed coatmaster Flex server software and an operating license, is perfect for working without Wi-Fi and cloud connection.

Includes 2x Wi-Fi antennas, a VESA mounting plate, and an external 100-240 V power supply, enabling efficient local storage and operation.

Calibration samples (DIN 17025)
Art. No. 840.0013



Set of three calibration samples certified to meet DIN 17025 standards for precision.

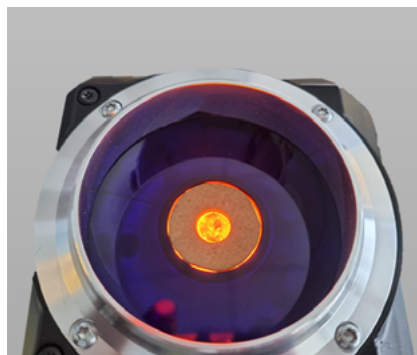
Regular verification with these certified samples ensures your device meets industry standards and compliance protocols, crucial for quality audits.

Maintenance kit
Art. No. 100.0013



Includes replacement for infrared optics & 12 air filters.

Detachable Optics for Hot Surfaces
Art. No. 400.0012



Detachable optics for hot surfaces up to 100 °C (212 °F)

Flex 1-year License
Art. No. 810.0014



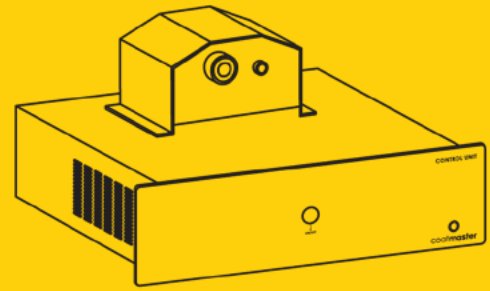
The coatmaster Flex License ensures the seamless operation of the device, including the access to the coatmaster Cloud.

Flex 3-year License
Art. No. 810.0015



Secure uninterrupted performance with the coatmaster Flex 3-year license extension, eliminating the need for yearly purchases and reducing costs.










coatmaster 3D Modular Base station



A picture tells more than a thousand words – and hundreds of thousands of coating thickness measurements result in a detailed coating thickness distribution.

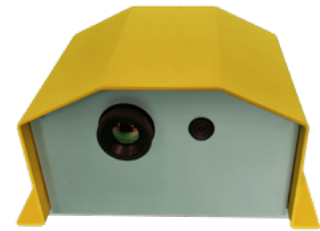
Would you like to not only automate your coating thickness measurement but also fully automate the operation of your coating line? In that case, the coatmaster 3D is your perfect companion! It measures coating thickness distributions across square meters in just a split second, ensuring that not a single spot is missed!

Key advantages of coatmaster 3D Modular:

-  **Map coating thickness distribution** – Across several square meters while maintaining high spatial resolution.
-  **Reduces paint consumption** – Optimized coating lines save more than 30% on paint on average.
-  **Reduces rework** – Prevents costly errors and enhances the efficiency of your coating line.
-  **Automatic documentation** – Seamless integration into quality control systems.
-  **Closed-loop-ready** – Upgrade your coating line with closed-loop technology at any time.
-  **Measure in the running line** – Direct measurement on moving parts virtually at any line speed.
-  **Fast & precise** – No handling problems or fluctuating results, thanks to an ultrafast 0.3-second measurement process.
-  **Accurate even for high coating thicknesses** – Reliable measurements up to high thickness.
-  **Completely eye-safe operation** – No lasers or other harmful radiation.

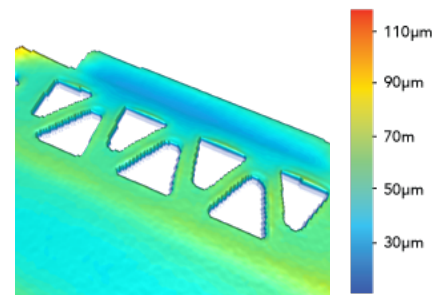


More information about the coatmaster 3D Modular:
www.coatmaster.com/en/3d



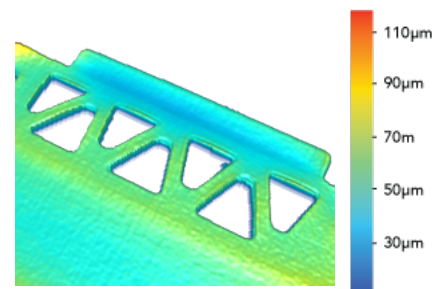
3D Modular SR base station
Art. No. 100.1054

Measurement resolution: 382x288



3D Modular HR base station
Art. No. 100.1052

Measurement resolution: 640x512



Scope of delivery:

Control unit: coatmaster 3D Modular control unit 1-phase for two light sources
OR

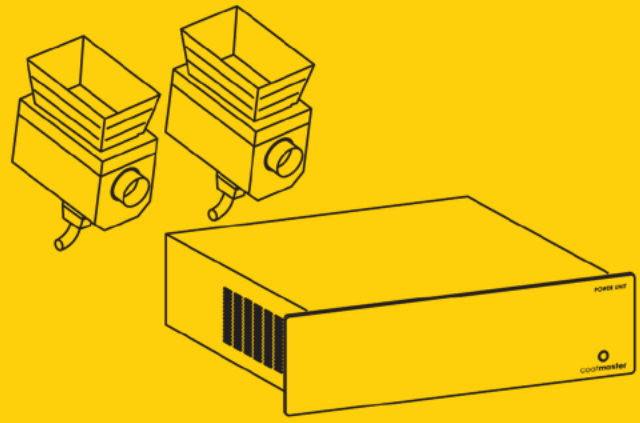
coatmaster 3D Modular control Unit 3-phase for more than two light sources

Measuring head: coatmaster 3D Modular measuring head SR or HR, accordingly

Specifications according to data sheet

New: Record breaking lifetime of wear parts!

coatmaster 3D Modular Excitation system



Depending on the measurement area and the geometry of the object, a certain number of excitation units are required. Each excitation unit consists of a power unit and two light sources. One excitation unit can cover an area of 1 m x 0.5 m. Up to four excitation units can be connected to a single coatmaster 3D modular system. Wheels up to 26 inches in size can typically be measured using just one excitation unit. However, more voluminous objects, such as oven cavities, require two excitation units.

Excitation system

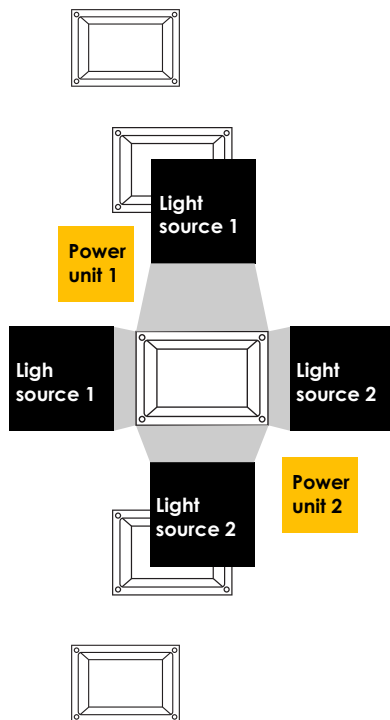
Art. No. 100.1061

Scope of delivery:

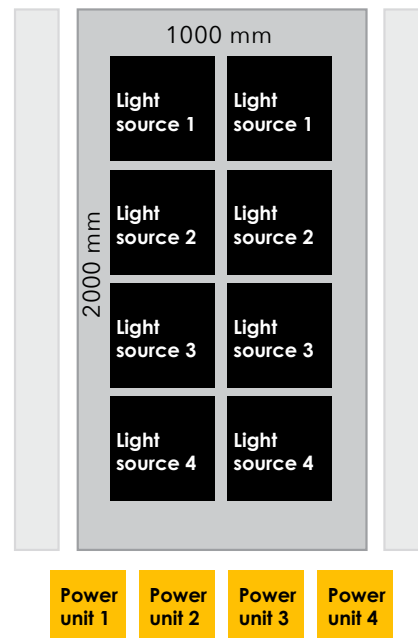
- 2x forced ventilation cooled light sources with typical illumination area for powder before curing 0.5m x 0.5m per light source
- 1x power unit with Ethernet remote control interface
- 2x standard cable 5m (extendable to max. 20m)

Integration examples

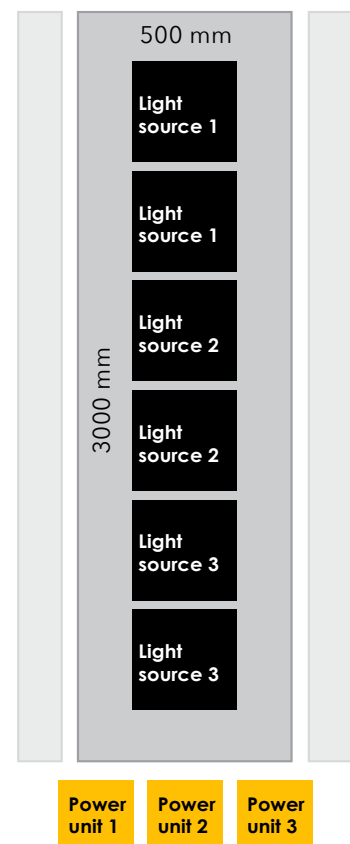
Oven cavities



Horizontal coating lines (scanning mode)



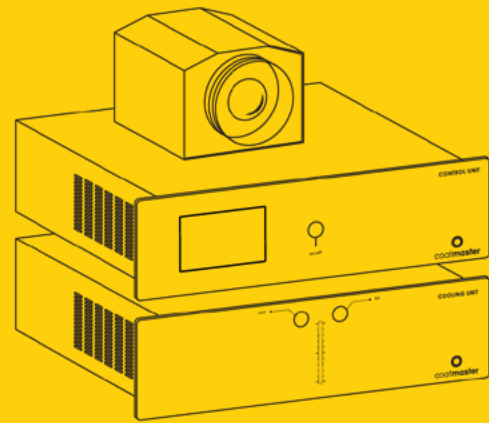
Specifications according to data sheet



- **Extra long lifetime:** Replacement of flash bulbs after 3 - 15 million measurements (depending on energy settings)
- Maintenance & re-calibration suggested after one year

New: Record breaking lifetime of wear parts!

coatmaster 3D Inline Base station



Precision where it matters most - even at edges and corners

Where other inline systems reach their limits, the coatmaster inline 3D delivers: As the only system of its kind, it enables high-resolution, contactless coating thickness measurement in real time - even on sharp edges, corners, or complex geometries. Because here, even millimeters matter. Gain full transparency over your coating process - with spatial resolution where it counts most.

Key advantages of coatmaster 3D Inline:



Ultra high spatial resolution – for detailed thickness profiles.



Reduces paint consumption – Optimized coating lines save more than 30% on paint on average.



Reduces rework – Accurate results even on critical geometries.



Automatic documentation – Seamless integration into quality control systems.



Closed-loop-ready – Upgrade your coating line with closed-loop technology at any time.



Real-time inline measurement - no production stop.



Fast & precise – No handling problems or fluctuating results, thanks to an ultrafast 0.3-second measurement process.



Accurate even for high coating thicknesses – Reliable measurements up to high thickness.



Completely eye-safe operation – No lasers or other harmful radiation.

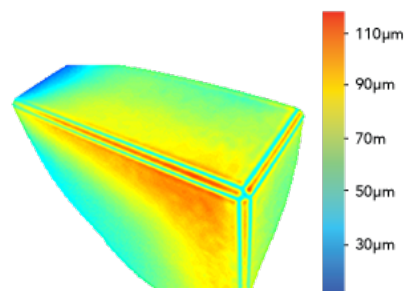
- **Extra long lifetime:** Replacement of flash bulbs after 3 - 15 million measurements (depending on energy settings)
- Maintenance & re-calibration suggested after one year
- Optics: all systems available with 50° or 90° FOV (to be specified upon order)



3D Inline SR

Art. No. 100.1053

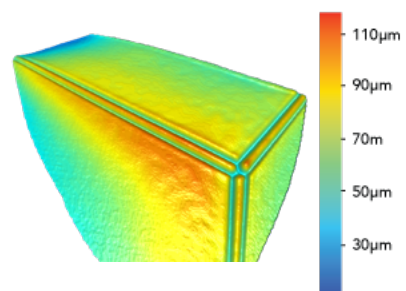
Measurement resolution: 382x288



3D Inline HR

Art. No. 100.1051

Measurement resolution: 640x512



Scope of delivery:

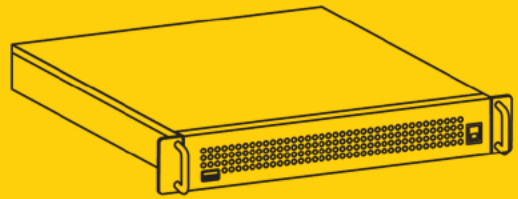
Control unit
Cooling unit
coatmaster 3D Inline measuring head SR or HR, accordingly
Drag chain cable 5m (extendable to max. 20m)



More information about the coatmaster 3D Inline:
www.coatmaster.com/en/3d

New

coatmaster 3D Inline Measurement server



Ultra-Fast Processing Power for Real-Time Precision

The coatmaster Measurement Server is the high-performance backbone of the coatmaster Inline 3D measurement system – offered as a separate catalog item to unlock the full potential of advanced inline quality control.

Thanks to its exceptional processing speed, this server increases measurement throughput by a factor of 36. This leap in performance enables the use of more sophisticated and computationally intensive algorithms, resulting in significantly improved precision and repeatability of layer thickness measurements – even in the most demanding production environments.

Key advantages of coatmaster's measurement server:

Real-time evaluation: Complete measurement data analysis in less than one second.

Extreme scalability: Handles up to 100,000 data points in a single measurement – effortlessly.

Unlimited analytical power: Simultaneously track and analyze thousands of Regions of Interest over days, weeks, or even months.

Multi-head support: Seamlessly integrate and synchronize up to 8 coatmaster Inline 3D sensors with a single server unit.

Statistical excellence: Perform deep statistical evaluations across tens or hundreds of thousands of measurements in real time.

The coatmaster Measurement Server sets a new benchmark in high-speed, high-accuracy inline measurement – delivering the data resolution and responsiveness modern production lines demand.



Measurement server
Art. No. 200.0037

Specifications according to data sheet

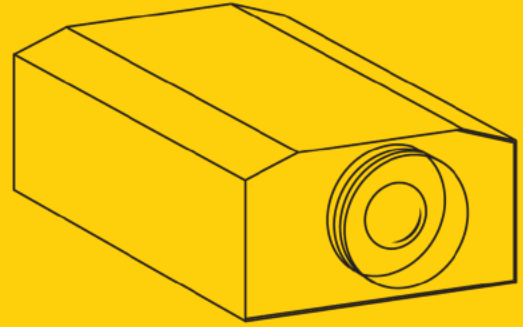
At least one measurement server is required, multiple coatmaster 3D Inline devices can be connected for synchronized operation.



More information about the
coatmaster 3D Inline:
www.coatmaster.com/en/3d

New: Record breaking lifetime of wear parts!

coatmaster 3D Atline



Precision meets flexibility – portable and high-resolution

coatmaster Atline 3D – All-in-one portable solution

The coatmaster atline 3D combines the superior measurement capabilities of the proven coatmaster inline 3D with unparalleled portability. Featuring all essential components integrated into a compact and robust housing, it offers maximum flexibility for laboratory use and mobile demonstrations.

Key advantages of coatmaster 3D Atline:



All-in-one integration – All components housed securely in one portable device, ideal for mobile and laboratory applications.



Easy transport and setup – Quick and convenient transport between different measurement locations.



High resolution – Same spatial resolution and precision as the Inline 3D model, perfect for measuring edges, corners, and complex geometries.



Data integration – Real-time data transfer via Wi-Fi, seamless integration into quality control systems.



Real-time non-contact measurement – Performs precise thickness measurements instantly, without production stops.



Demonstration-ready – Designed specifically for mobile demonstrations, showcasing superior technology easily and effectively.



Robust & versatile – Durable design suitable for diverse environments, providing reliable performance wherever needed.



Fast & precise – Ultrafast 0.3-second measurement process.



Accurate even for high coating thicknesses – Reliable measurements up to high thickness.



Completely eye-safe operation – No lasers or other harmful radiation.



3D Atline SR

Art. No. 100.1055

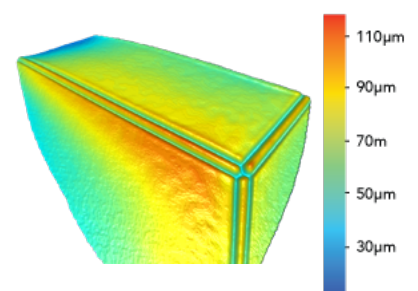
Measurement resolution: 382x288



3D Atline HR

Art. No. 100.1056

Measurement resolution: 640x512



Scope of delivery:

coatmaster Atline 3D
Operating manual

- **Extra long lifetime:** Replacement of flash bulbs after 3 -15 million measurements (depending on energy settings)
- Maintenance & re-calibration suggested after one year
- Optics: all systems available with 50° or 90° FOV (to be specified upon order)

coatmaster 3D Operating software Windows 10/11, Browser

Display measurement result images

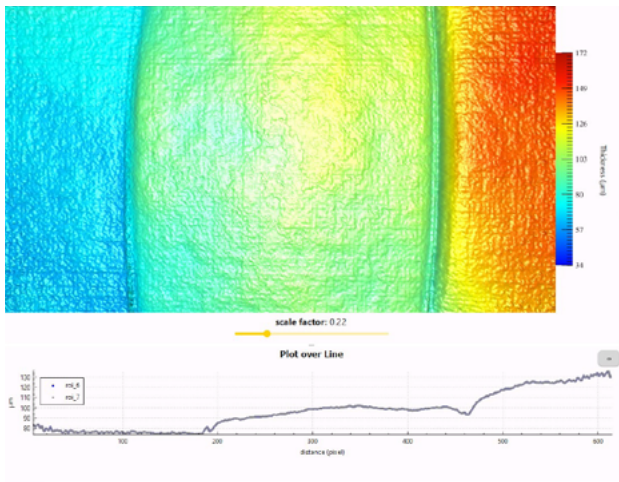
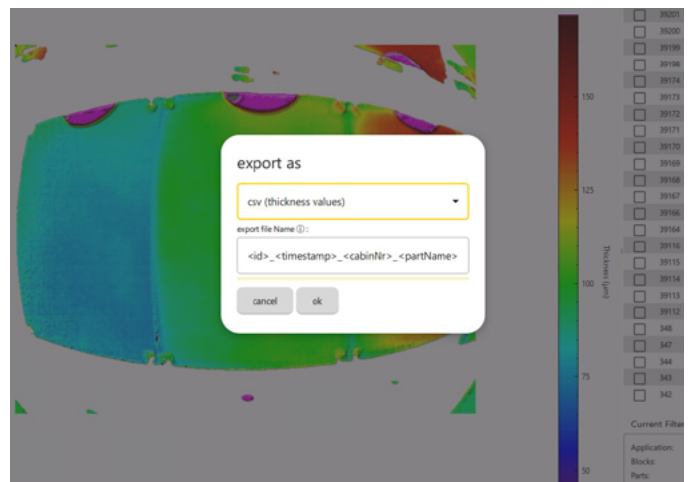
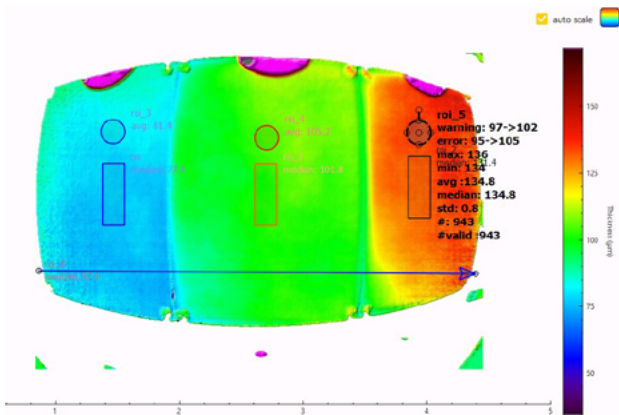


Image & Data export and import



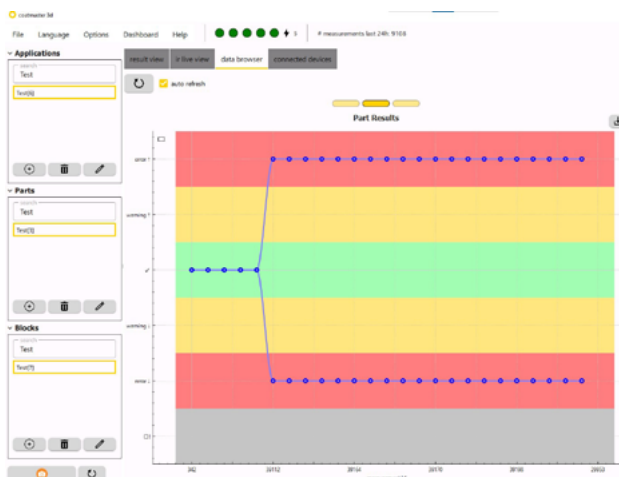
Definition and display of statistics in freely definable regions-of-interest



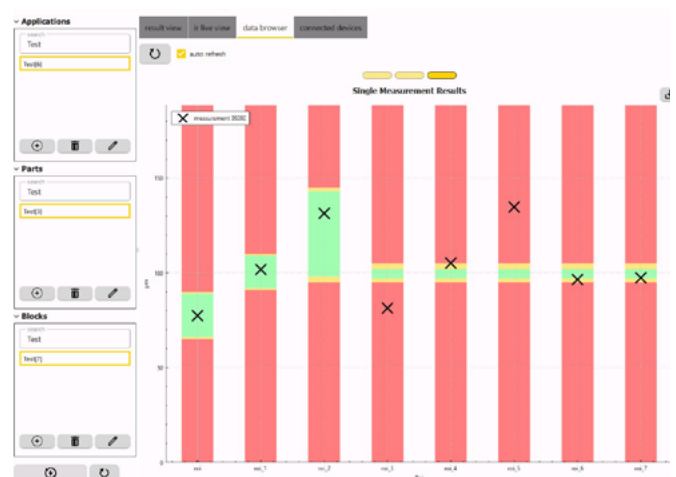
Manual and automated measurement triggering



Time tracking of view of statistics

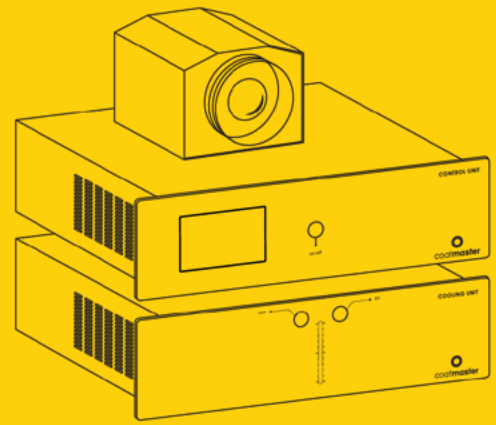


Data browser



New: Record breaking lifetime of wear parts!

coatmaster Inline



Reliable spot measurements under production conditions

The coatmaster Inline is specially designed for reliable, precise single-point thickness measurements, ideal for continuous industrial operations. Known for its rugged construction, the Inline delivers exceptional accuracy on a variety of materials, including plastics and wood, even under demanding manufacturing conditions.



Key advantages of coatmaster Inline:



High Accuracy – Exceptional precision in spot measurements ensures optimal coating quality.



Rugged Design – Built for robust performance in challenging industrial environments.



Versatile Material Compatibility – Accurate thickness measurements on diverse materials such as plastics, wood, and metals.



Real-time Measurements – Instant measurement results allow immediate process adjustments.



Production Integration – Seamlessly integrates into existing manufacturing processes, ideal for continuous inline quality control.



Data integration – Real-time data transfer via Wi-Fi, seamless integration into quality control systems.



Completely eye-safe operation – No lasers or other harmful radiation.

Inline m1

Art. No. 100.1021

Inline m2

Art. No. 100.1022

Inline m3

Art. No. 100.1023

Inline m4

Art. No. 100.1024

Specifications according to data sheet

Scope of delivery:

coatmaster Inline

Control Unit

Cooling Unit

Standard calibration certificates

Operating manual

Drag chain cable 5m (extendable to max. 15m)

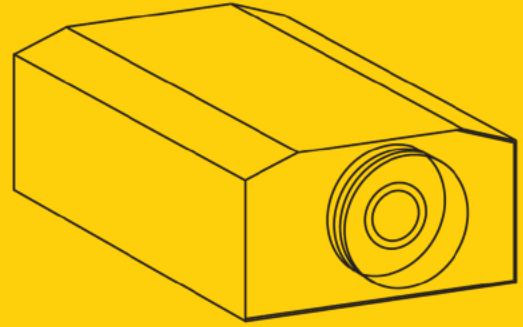


More information about the coatmaster Inline:
coatmaster.com/en/inline

- **Extra long lifetime:** Replacement of flash bulbs after 3 - 15 million measurements (depending on energy settings)
- Maintenance & re-calibration suggested after one year
- coatmaster Operating Software (Windows)
- Available optics for defining measurement spot size: 137mm, 268mm, 373mm, 541mm, parallel optics (to be specified upon order)

New: Record breaking lifetime of wear parts!

coatmaster Atline



The mobile solution for accurate spot measurements

The coatmaster Atline brings the reliability and accuracy of the coatmaster Inline into a highly portable and compact design. Ideal for laboratory applications, demonstrations, and mobile quality checks, this robust device ensures precise single-point measurements on various substrates such as plastics, wood, and metal.

Key advantages of coatmaster Atline:



High Accuracy – Consistent, reliable spot measurements comparable to stationary inline solutions.



Rugged Design – Built for robust performance in challenging industrial environments.



Versatile Material Compatibility – Accurate thickness measurements on diverse materials such as plastics, wood, and metals.



Real-time Measurements – Instant measurement results allow immediate process adjustments.



Production Integration – Seamlessly integrates into existing manufacturing processes, ideal for continuous inline quality control.



Data integration – Real-time data transfer via Wi-Fi, seamless integration into quality control systems.



Completely eye-safe operation – No lasers or other harmful radiation.



Atline m1

Art. No. 100.1011

Atline m2

Art. No. 100.1012

Atline m3

Art. No. 100.1013

Atline m4

Art. No. 100.1014

Specifications according to data sheet

Scope of delivery:

coatmaster Atline
Standard calibration certificates
Operating manual

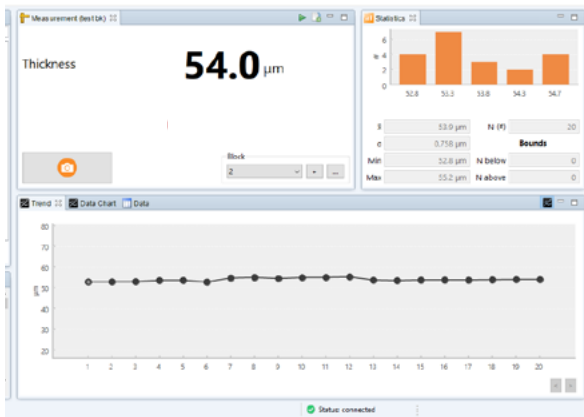


More information about the
coatmaster Atline:
coatmaster.com/en/atline

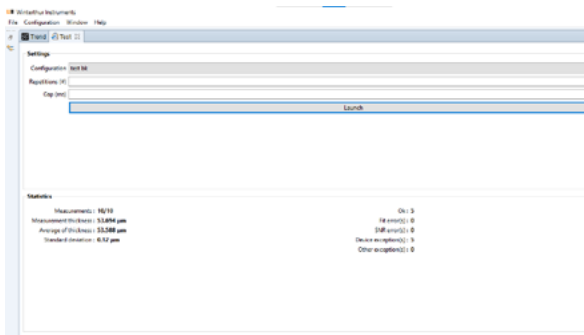
- **Extra long lifetime:** Replacement of flash bulbs after 3 - 15 million measurements (depending on energy settings)
- Maintenance & re-calibration suggested after one year
- coatmaster Operating Software (Windows 10)
- Available optics for defining measurement spot size: 137mm, 268mm, 373mm, 541mm, parallel optics (to be specified upon order)

coatmaster Inline/Atline Operating software Windows 10/11

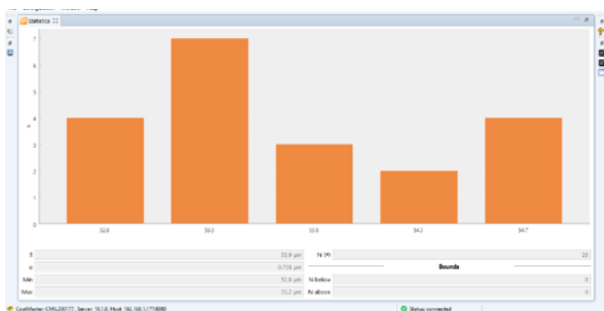
Display measurement result images



Manual and automated measurement triggering



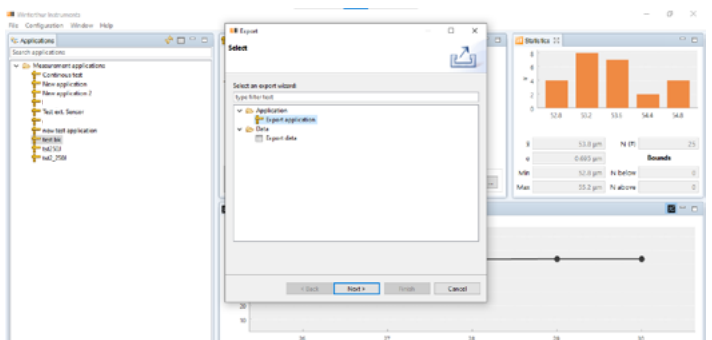
Display of measurement statistics



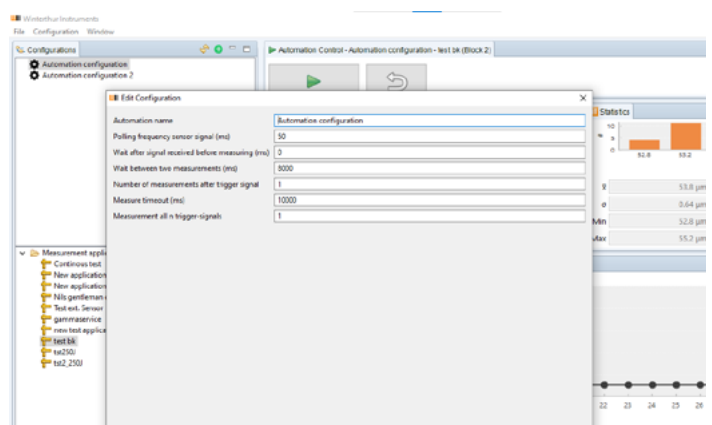
Time tracking of statistics

Time	Operation	Elapsed	Input	Output
2023-05-05 16:16:11.230	Measure	232 ms	egtlon-samp...	data-avgData-ide-1425038-coatMaster-Tue May 06 01:59:31 CEST...
2023-05-05 16:16:09.949	Evaluate	187 ms	argon-bound...	data-avgData-ide-1425038-coatMaster-Tue May 06 01:59:31 CEST...
2023-05-05 16:16:09.739	Measure	211 ms	egtlon-samp...	data-avgData-ide-1425038-coatMaster-Tue May 06 01:59:31 CEST...
2023-05-05 16:16:09.361	Evaluate	203 ms	argon-bound...	data-avgData-ide-1425038-coatMaster-Tue May 06 01:59:31 CEST...
2023-05-05 16:16:09.077	Measure	226 ms	egtlon-samp...	data-avgData-ide-1425038-coatMaster-Tue May 06 01:59:31 CEST...
2023-05-05 16:16:08.796	Evaluate	203 ms	argon-bound...	data-avgData-ide-1425038-coatMaster-Tue May 06 01:59:31 CEST...
2023-05-05 16:16:08.543	Measure	221 ms	egtlon-samp...	data-avgData-ide-1425038-coatMaster-Tue May 06 01:59:31 CEST...
2023-05-05 16:16:01.381	Evaluate	281 ms	argon-bound...	data-avgData-ide-1425038-coatMaster-Tue May 06 01:59:31 CEST...
2023-05-05 16:16:01.177	Measure	204 ms	egtlon-samp...	data-avgData-ide-1425038-coatMaster-Tue May 06 01:59:31 CEST...
2023-05-05 16:15:40.037	Evaluate	276 ms	argon-bound...	data-avgData-ide-1425038-coatMaster-Tue May 06 01:59:31 CEST...
2023-05-05 16:15:38.793	Measure	234 ms	egtlon-samp...	data-avgData-ide-1425038-coatMaster-Tue May 06 01:59:31 CEST...
2023-05-05 16:15:35.024	Evaluate	203 ms	argon-bound...	data-avgData-ide-1425038-coatMaster-Tue May 06 01:59:31 CEST...
2023-05-05 16:15:33.770	Measure	234 ms	egtlon-samp...	data-avgData-ide-1425038-coatMaster-Tue May 06 01:59:31 CEST...
2023-05-05 16:15:33.516	Evaluate	202 ms	argon-bound...	data-avgData-ide-1425038-coatMaster-Tue May 06 01:59:31 CEST...
2023-05-05 16:15:33.282	Measure	228 ms	egtlon-samp...	data-avgData-ide-1425038-coatMaster-Tue May 06 01:59:31 CEST...
2023-05-05 16:15:33.079	Evaluate	273 ms	argon-bound...	data-avgData-ide-1425038-coatMaster-Tue May 06 01:59:31 CEST...
2023-05-05 16:15:32.837	Measure	242 ms	egtlon-samp...	data-avgData-ide-1425038-coatMaster-Tue May 06 01:59:31 CEST...
2023-05-05 16:15:48.383	Evaluate	230 ms	argon-bound...	data-avgData-ide-1425038-coatMaster-Tue May 06 01:59:31 CEST...
2023-05-05 16:15:48.176	Measure	207 ms	egtlon-samp...	data-avgData-ide-1425038-coatMaster-Tue May 06 01:59:31 CEST...
2023-05-05 16:15:48.574	Evaluate	265 ms	argon-bound...	data-avgData-ide-1425038-coatMaster-Tue May 06 01:59:31 CEST...
2023-05-05 16:15:48.278	Measure	196 ms	egtlon-samp...	data-avgData-ide-1425038-coatMaster-Tue May 06 01:59:31 CEST...
2023-05-05 16:15:42.766	Evaluate	230 ms	argon-bound...	data-avgData-ide-1425038-coatMaster-Tue May 06 01:59:31 CEST...
2023-05-05 16:15:42.553	Measure	213 ms	egtlon-samp...	data-avgData-ide-1425038-coatMaster-Tue May 06 01:59:31 CEST...
2023-05-05 16:15:39.989	Evaluate	172 ms	argon-bound...	data-avgData-ide-1425038-coatMaster-Tue May 06 01:59:31 CEST...
2023-05-05 16:15:39.882	Measure	187 ms	egtlon-samp...	data-avgData-ide-1425038-coatMaster-Tue May 06 01:59:31 CEST...
2023-05-05 16:15:37.884	Evaluate	224 ms	argon-bound...	data-avgData-ide-1425038-coatMaster-Tue May 06 01:59:31 CEST...
2023-05-05 16:15:37.549	Measure	225 ms	egtlon-samp...	data-avgData-ide-1425038-coatMaster-Tue May 06 01:59:31 CEST...
2023-05-05 16:15:35.183	Evaluate	230 ms	argon-bound...	data-avgData-ide-1425038-coatMaster-Tue May 06 01:59:31 CEST...
2023-05-05 16:15:34.989	Measure	214 ms	egtlon-samp...	data-avgData-ide-1425038-coatMaster-Tue May 06 01:59:31 CEST...
2023-05-05 16:15:32.246	Evaluate	204 ms	argon-bound...	data-avgData-ide-1425038-coatMaster-Tue May 06 01:59:31 CEST...
2023-05-05 16:15:32.753	Measure	212 ms	egtlon-samp...	data-avgData-ide-1425038-coatMaster-Tue May 06 01:59:31 CEST...

Data & application export and import



Process automation





coatmaster

coatmaster.com